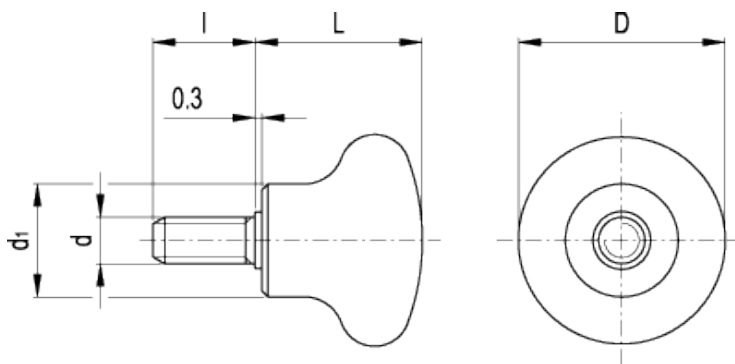


# P.131 p

Handles



## technical informations

### Material

Phenolic based (PF) Duroplast. Resistant to solvents, oils, greases and other chemical agents.

### Colour

Black, glossy finish.

### Assembly

Zinc-plated steel stud, chamfered flat end according to UNI 947 : ISO 4753 (see [Technical Data](#) ).

Standard Elements		Main dimensions			Threaded stud		Weight
Code	Description	D	L	d <sub>1</sub>	d <sub>6g</sub>	l	g
46411	P.131/35 p-M8x25	34	24.5	19	M8	25	36
46511	P.131/45 p-M10x20	44	34	24	M10	20	58



ELESA and GANTER models all rights reserved in accordance with the law. Always mention the source when reproducing our drawings.

**STANDARD MACHINE ELEMENTS WORLDWIDE**